

Coaxial

Low Noise Amplifier

ZFL-500HLN

50Ω

10 to 500 MHz

Features

- low noise, 3.8 dB typ.
- high IP3, +30 dBm typ.



CASE STYLE: Y460

Applications

- VHF/UHF
- small signal amplifier
- communications system

Connectors	Model	Price	Qty.
SMA	ZFL-500HLN	\$99.95	(1-9)
BRACKET (OPTION "B")		\$2.50	(1+)

Low Noise Amplifier Electrical Specifications

MODEL NO.	FREQUENCY (MHz)		NOISE FIGURE (dB)	GAIN (dB)		MAXIMUM POWER (dBm)		INTERCEPT POINT (dBm)	VSWR (:1) Typ.		DC POWER	
	f_L	f_U		Typ.	Min.	Flatness Max. Total Range	Output (1 dB Compr.)		Input (no damage)	IP3 Typ.	In	Out
ZFL-500HLN	10	500	3.8	19	±0.4	+16	+15	+30	2.0	2.0	15	110

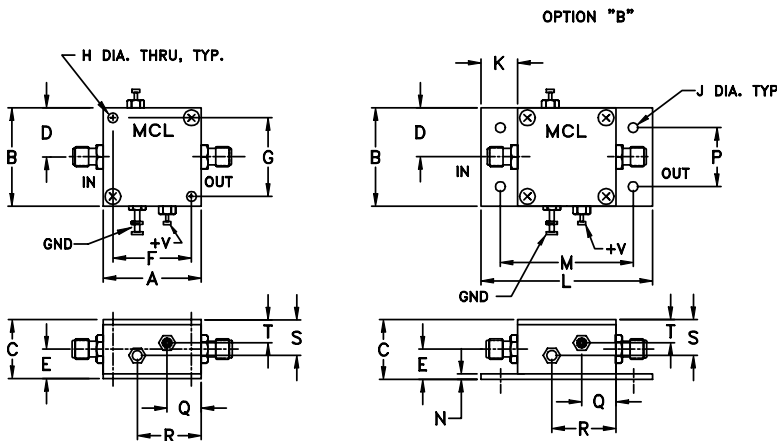
m = mid range [2 f_L to $f_U/2$]

Open load is not recommended, potentially can cause damage.
With no load derate max input power by 20 dB

Maximum Ratings

Operating Temperature	-54°C to 85°C
Storage Temperature	-55°C to 100°C
DC Voltage	+17V Max.

Outline Drawing



Outline Dimensions (inch/mm)

A	B	C	D	E	F	G	H	J	K
1.25	1.25	.75	.63	.36	1.000	1.000	.125	.125	.46
31.75	31.75	19.05	16.00	9.14	25.40	25.40	3.18	3.18	11.68
L	M	N	P	Q	R	S	S		wt.
2.18	1.688	.06	.750	.50	.80	.45	.29		grams
55.37	42.88	1.52	19.05	12.70	20.32	11.43	7.37		38



INTERNET <http://www.minicircuits.com>

P.O. Box 350166, Brooklyn, New York 11235-0003 (718) 934-4500 Fax (718) 332-4661

Distribution Centers NORTH AMERICA 800-654-7949 • 417-335-5935 • Fax 417-335-5945 • EUROPE 44-1252-832600 • Fax 44-1252-837010

Mini-Circuits ISO 9001 & ISO 14001 Certified

FREQUENCY (MHz)	GAIN (dB)			DIRECTIVITY (dB)			VSWR (:1)		NOISE FIGURE (dB)	POUT at 1 dB COMPR. (dBm)
	12V	15V	16V	12V	15V	16V	IN	OUT		
10.00	20.50	20.97	21.05	16.70	16.20	16.30	1.24	1.17	3.83	16.78
19.30	20.37	20.82	20.92	17.10	17.00	16.00	1.12	1.13	3.84	17.09
46.50	20.21	20.68	20.76	17.50	15.30	15.90	1.05	1.11	3.83	17.14
111.80	20.31	20.78	20.87	16.20	15.20	16.50	1.02	1.11	3.89	17.19
198.50	20.22	20.66	20.77	15.60	16.20	15.30	1.02	1.06	3.88	17.17
248.70	20.35	20.82	20.90	15.80	15.10	14.90	1.04	1.07	3.92	17.13
311.50	20.22	20.69	20.77	15.80	15.20	15.00	1.07	1.06	3.95	16.97
374.40	20.46	20.96	21.03	14.30	15.10	14.20	1.10	1.10	3.96	16.95
437.20	20.32	20.79	20.90	14.20	13.90	13.60	1.13	1.17	3.97	16.91
500.00	20.36	20.87	20.96	13.80	13.20	12.30	1.17	1.25	3.97	16.91

